



# **PIR Motion Sensor**

## **Quick Start Guide**

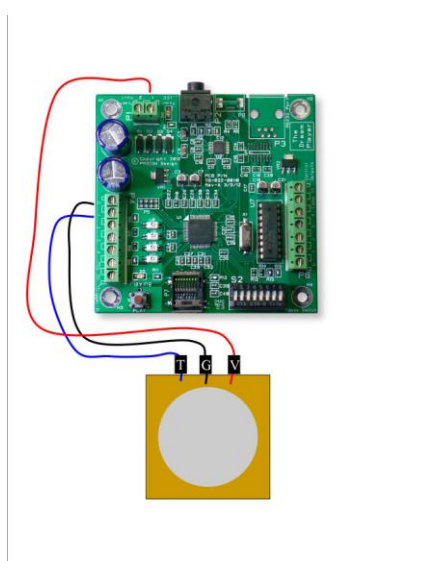
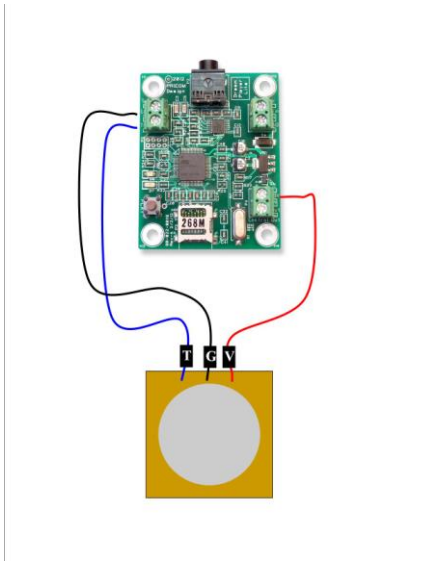
Version 1.0  
Copyright ©2012 PRICOM Design

# 1 Operation

---

The Motion Sensor is a relatively easy circuit to understand. It has three wires that will be labeled when you receive it. The wires are Trigger (T), Ground(G), and Voltage(V). The illustrations below give a good visual illustration of where all the wires connect to using a PRICOM Dream Player LITE, and an MK2. Now please note that the actual wire colors may or may not match the coloring of the illustrations.

**Figure 1 - Connection Diagram**



## 2 Power

---

The Motion Sensor operates between 6-12 Volts DC. After initial power-on the sensor will require a “warm-up” period of 5-10 seconds to determine the positioning of articles in the room in order to establish a reference of what the normal room looks like. Please note that if you are connecting your motion sensor to a PRICOM Dream Player MK2 that the Voltage wire is connected to the power input terminal strip. Also make sure that this is the Voltage In wire of the power supply and not the Ground wire.

## 3 Connections

---

### Connections

**Trigger (T):** When looking at the sensor from the top where you can see the white cover dome and the wires facing away from you this is the left most wire.

When the motion sensor is activated this is the wire that the sensor will send the signal to indicate there is activity in front of it.

**Ground (G):** This is the middle wire on the sensor, and is a simple connection to Ground.

**Voltage (V):** This is the right most wire. It is this wire that you should connect to power between 6-12 Volts DC.



## 4 Support

---

If for some reason you have any problems or issues with your PIR Motion Sensor, please contact us and we will do our best to help. Or if you have any questions or need assistance about the general use of the Sensor feel free to contact us as well.

PRICOM Design  
2755 Slocum Rd  
Peyton, CO 80831  
[www.pricom.com](http://www.pricom.com)  
[info@pricom.com](mailto:info@pricom.com)

